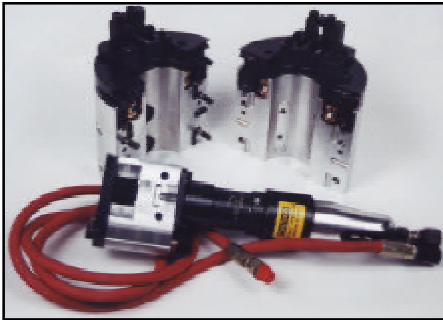




# “EB” Weld Excavation & Tube Beveler

The “EB” is specifically built for excavation of dissimilar welds in boiler applications. It also performs cut and bevel operations on heavy wall boiler tubes. The “EB” clamps to the tube with self centering clamp pads. The cutting/feed system on the “EB” is comprised of 2 tool slides and a spring loaded trip assembly. The feed system requires no adjustment and no star wheel alignment. Each tool slide provides up to 3/4” (19mm) of travel.

Designed to work with ease, the “EB” only requires 2 hand tools for setup. The spherical alignment pins allow the frame halves to be split and reassemble together effortlessly. Seals and brushes keep metal chips away from bearing raceways, reducing maintenance downtime.



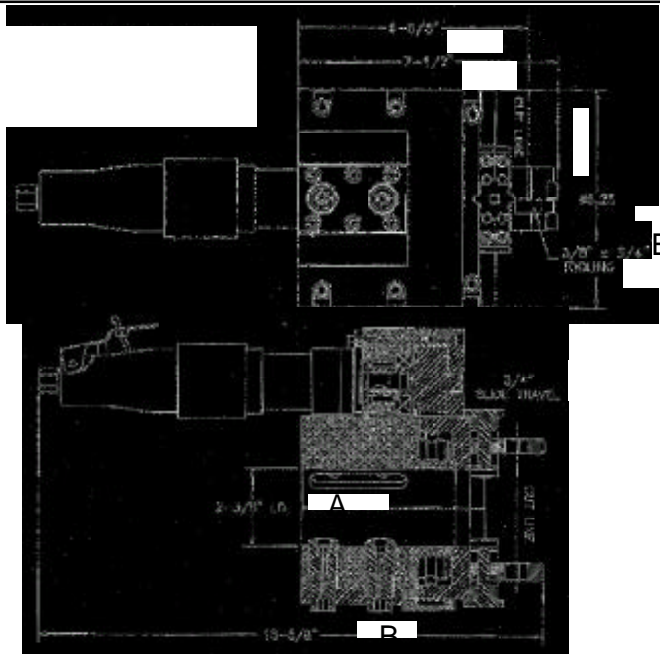
## Features:

- Mounts on 1.750”-2.250” (44.4-57.1mm) O.D. tubing
- Air powered - requires 35 cfm @90psi (.99 cmm @ 6.3 Bar)
- Only 2” (50.8mm) radial clearance required on 2.25” (57.1mm) O.D. pipe
- Spherical alignment pins effortless splitting and reassembly
- Adjustable eccentric bearings compensate for wear
- 3/4” (19mm) tool slide travel
- Spring loaded trip - self adjusting feed rate to cutting conditions for optimal cuts
- On/Off trip lever



- Minimal side clearance for use in tight boiler areas
- New...Simplified Feed Mechanism
- Competitive Rental Rates

Machining Functions:	Boiler tube weld excavating, sever and bevel.
Capacity:	Machine boiler tube 1.750” to 2.250” (44.4-57.1mm)
Feed:	Starwheel trip
Drive:	Pneumatic
Air Requirements:	35 cfm @ 90 psi
Air motor:	1.0 HP
Tooling:	High speed steel form tools. 3/8” to 3/4” (9x19mm)
Clearance Required:	2” (50.8mm) on 2.25” (57.1mm) O.D.
Installation:	5 minute set up.
Controls:	On/Off trip lever. On/Off air motor with safety lock out
Clamping	O.D. clamping 1.750” to 2.250” (44.4 - 57.1mm)
Standard Equipment:	Basic EB machine, air motor, 6’ hose whip w/swivel, two cutting slides, On/Off trip lever, installation tools, storage case and operating manual.
Optional Equipment:	Clamping leg sets



“A” Dimension	2.375” (60.3mm) I.D.
“B” Dimension	15.625” (396.8mm)
“C” Dimension	6.625” (168.2mm)
“D” Dimension	7.500” (190.5mm)
“E” Dimension	6.25” (158.7mm) O.D.
“F” Dimension	5.5” (139.7mm)

- \* 3/8” x 3/4” Tooling(9x19mm)
- \* 3/4” Slide Travel(19mm)

