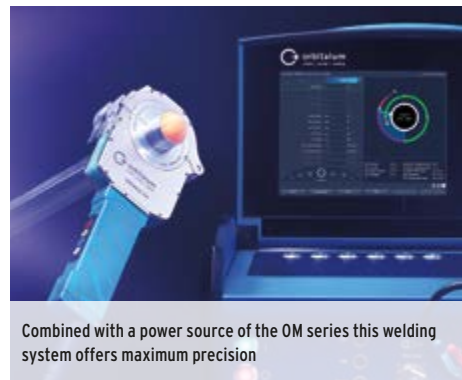


ORBIWELD 38S, 76S, 115S

RENTAL
AVAILABILITY

Secure clamping of the parts to be welded without misalignment



Combined with a power source of the OM series this welding system offers maximum precision

ENCLOSED ORBITAL WELD HEADS

EASIER TO HANDLE, MORE ECONOMICAL, MORE EFFECTIVE - ENCLOSED TIG ORBITAL WELDING HEADS WITH OUTSTANDING CHARACTERISTICS: THE ORBIWELD "S" SERIES FROM ORBITALUM CONVINCES BY ITS EXTREMELY NARROW DESIGN AND HIGH DURABILITY BY ITS EFFICIENT INTEGRATED WATER COOLING SYSTEM.

The small dimensions of the ORBIWELD "S" series make it ideal for applications where space is very restricted, such as the pharmaceutical and chemical industry, the semiconductor, food and beverage industry as well as aerospace.

All enclosed orbital weld heads of the ORBIWELD series are made from strong, durable materials of the finest quality and are characterized by their unique water cooling system.

The appropriate high-grade, functional and long-lasting clamping inserts are lasting longer than the inserts of many competitors.

The inserts are available in small and wide design and easily and quickly insert-able into the weld heads.

FEATURES:

- Thanks to the extremely narrow design, parts with short straight welding lengths can also be processed
- High-quality, rugged housing and handle parts
- High durability due to completely water-cooled weld head housing
- Highly flexible hose package (Length: 7.5 m/ 24.6 ft) with strain relief to the power supply
- All the important commands for welding can be transmitted to the power supply via a control panel built into the robust and durable aluminum handle, so that no additional remote control is required
- Tool-Free Quick change system for clamping inserts that engages and releases smoothly
- Cost-effective clamping inserts
- Durable clamping connections in combination with clamping inserts available for all tube dimensions guarantee that the parts to be welded are clamped securely without misalignment
- Comprehensive and customer-specific range of accessories
- NEW: A folding cover at the weld head enables to test and/or to readjust the electrode position before the welding procedure

ORBIWELD 38S, 76S, 115S Enclosed Orbital Weld Heads

ORBIWELD 38S, ORBIWELD 76S, ORBIWELD 115S

Clamping inserts are not included in the scope of delivery.

APPLICATION RANGE	ORBIWELD 38S	ORBIWELD 76S	ORBIWELD 115S
Code	OT826.000.001	OT827.000.001	OT828.000.001
Tube OD, min. - max.	3 - 38.1 mm 1/8 in - 1.5 in	6 - 77 mm 1/4 in - 3.0 in	20 - 115 mm 3/4 in - 4.5 in
Electrode Ø	1.6/2.4 mm .063 in/.094 in	1.6/2.4 mm .063 in/.094 in	1.6/2.4 mm .063 in/.094 in
Weight	9 kg 19.8 lbs	9.4 kg 20.7 lbs	13 kg 28.7 lbs
Shipping Weight	16.5 kg	16.9 kg	18.6 kg
Hose package length	7.5 m 24.6 ft	7.5 m 24.6 ft	7.5 m 24.6 ft

SCOPE OF DELIVERY	
Includes:	Accessories (available option)s:
<ul style="list-style-type: none"> 1 Enclosed orbital weld head OW 38S, OW 76S or OW 115S 1 Durable storage and shipping case 1 Tool set 1 Operating instructions and spare parts list 	<ul style="list-style-type: none"> Clamping inserts, small and wide Spare pressure pieces Plastic case for clamping inserts Cavity inserts for moldings Inserts for elbow welding T-piece clamping shells Electrode adapters
	<ul style="list-style-type: none"> Table mounts ESG tungsten grinders ORBmax digital oxygen analyzer ORBIPURGE forming set Hose package extensions Inspection set WS2 tungsten electrodes



ORBIWELD 38S



ORBIWELD 76S



ORBIWELD 115S

ORBIWELD 38S

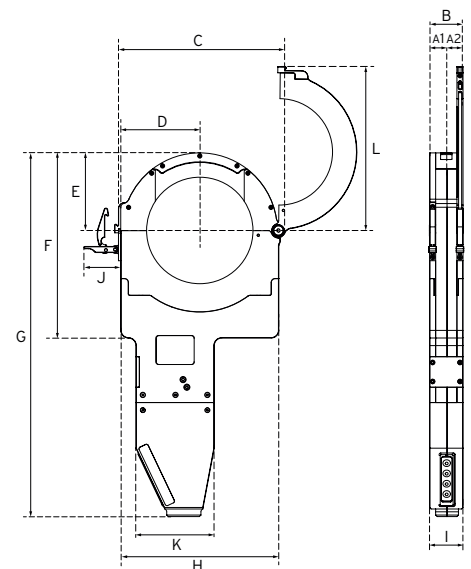
	OVERALL DIMENSION	CLAMPING INSERT TYPE [2 PAIR]
A1	0.67in (17mm)	0.69in (17.5mm)
A2	0.67in (17mm)	0.69in (17.5mm)
B	1.34in (34mm)	1.38in (35mm)
C	4.41in (112mm)	
D	1.87in (47.5mm)	
E	1.85in (47mm)	
F	5.67in (144mm)	
G	14.06in (357mm)	
H	3.74in (95mm)	
I	1.34in (34mm)	
J	2.17in (55mm)	
K	2.80in (71mm)	
L	4.33in (110mm)	

ORBIWELD 76S

	OVERALL DIMENSION	CLAMPING INSERT TYPE [2 PAIR]
A1	0.75in (19mm)	0.83 (21mm)
A2	0.75in (19mm)	0.83 (21mm)
B	1.5in (38mm)	1.65 (42mm)
C	6.26in (159mm)	
D	2.66in (67.5mm)	
E	2.6in (66mm)	
F	7.36in (187mm)	
G	15.75in (400mm)	
H	5.32in (135mm)	
I	1.34in (34mm)	
J	2.17in (55mm)	
K	2.8in (71mm)	
L	6.02in (153mm)	

ORBIWELD 115S

	OVERALL DIMENSION	CLAMPING INSERT TYPE	
		TYPE "S"	TYPE "W"
A1	0.9in (22.75mm)	1.01in (25.75mm)	1.8in (45.75mm)
A2	0.84in (21.25mm)	0.96in (24.25mm)	1.74in (44.25mm)
B	1.73in (44mm)	1.97in (50mm)	3.54in (90mm)
C	8.66in (220mm)		
D	4.09in (104mm)		
E	4.02in (102mm)		
F	9.61in (244mm)		
G	18.9in (480mm)		
H	8.19in (208mm)		
I	1.73in (44mm)		
J	2.17in (55mm)		
K	4.02in (102mm)		
L	8.5in (216mm)		



ORBIWELD 170

**RENTAL
AVAILABILITY**



ORBIWELD weld heads are working continuously even at high welding currents and intensive loads

OW 170



ENCLOSED ORBITAL WELD HEADS

THE ORBIWELD SERIES WELD HEADS FEATURE VERY HIGH THERMAL RESISTANCE AND ARE SUITABLE FOR APPLICATIONS IN THE CHEMICAL, PHARMACEUTICAL, FOOD AND BEVERAGE INDUSTRY, WHERE INCREASED DEMANDS ARE MADE BY EVER GREATER TUBE DIAMETERS AND WALL THICKNESSES.

Coolant channels running through the entire weld head body ensuring excellent heat dissipation and enabling continuous work at high welding currents and intensive load.

The closed design of the ORBIWELD series and the gas management system of the head ensure a complete infiltration of the weld seam during welding with inert gas, producing welds that are very low in welding colors.

FEATURES:

- High-quality, rugged, durable, water-cooled aluminum weld head housing and handle
- Remote control panel built into handle for all important welding commands
- Quick change tool-free clamping insert system engages and releases with cost-effective inserts smoothly for all tube dimensions, ensuring parts to be welded are clamped securely without misalignment
- Highly flexible hose package with strain relief to the power supply (Length: 7.5 m / 24.6 ft)



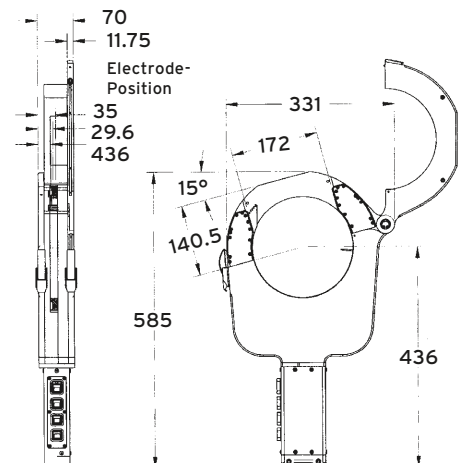
ORBIWELD 170 with integrated remote control

APPLICATION RANGE	ORBIWELD 170
Code	0T825.000.001
Tube OD, min. - max.	1.969 in - 6.693 in (50 - 170 mm)
Electrode Ø	.063 in/.094 in (1.6/2.4 mm)
Machine Weight	45.64 lb (20.7 kg)
Shipping Weight	79.81 lb (36.2 kg)
Hose package length	24.6 ft (7.5 m)

SCOPE OF DELIVERY

- Enclosed orbital weld head
- Durable storage & shipping case (Code 0T821.030.001)
- Tool set
- Operating instructions and spare parts list

DIMENSIONS (mm)



ORBIWELD CLAMPING INSERTS

CLAMPING INSERT PAIRS

Made of aluminum. 1 set of clamping inserts consists of 2 parts for 1 clamping side.

2 clamping inserts (= 4 parts) are required for each tube dimension.

For the ORBIWELD 115, 115S and 170 you can choose between wide "W" and small "S" clamping inserts which can be combined with one another as desired.

CLAMPING INSERT BLANKS

Ideal for special applications. Completely enclosed clamping inserts which can be drilled by customer to specific diameters.

MODEL	KG	CODE
Clamping insert blank for OW 38S, 2 pcs.		OT826.002.210
Clamping insert blank for OW 76S, 2 pcs.	9.9 oz (280 g)	OT827.002.241
Clamping insert blank for OW 115/115S "S" (small), 2 pcs.	1.3 lb (590 g)	OT824.002.220
Clamping insert blank for OW 115/115S "W" (wide), 2 pcs.	3.19 lb (1.45 kg)	OT824.002.420
Clamping insert blank for OW 170 "S" (small), 2 pcs.	2.23 lb (1.01 kg)	OT825.002.185
Clamping insert blank for OW 170 "W" (wide), 2 pcs.		OT825.002.385

TABLE MOUNTS

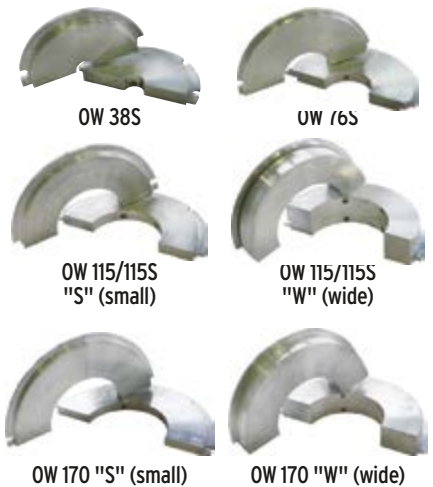
Practical and sturdy (anodized) aluminum table mounts.

For comfortable and secure storage of the ORBIWELD weld heads.

The mount is quickly and easily clamped to the table top using the integrated screw clamp. Thus, the weld head is firmly fixed in the holder for stationary applications - also ideal for storage or temporary placement of the weld head between individual welding jobs.

SPECIFICATIONS	TABLE MOUNTS
Dimensions (L x W x H)	7.1 in x 5.5 in x 7.3 in (180 x 140 x 185 mm)
Clamping range (bottom surface of table to maximum extended screw clamp)	max. 65 mm / 2.56 in

MODEL	KG	CODE
Table mount for OW 38S, OW 76S	2.76 lb (1.25 kg)	OT826.030.006
Table mount for OW 65, OW 115, OW 115S, OW 170	2.36 lb (1.07 kg)	OT823.030.006
Heavy Duty C-Clamp	3.7 lb (1.68 kg)	OT-823-000



Short Ferrule Collets



Table mounts



Heavy Duty C-Clamp

ORBIWELD Clamping Inserts

APPLICATION	TUBE OD		OW 38S	OW 76S	OW 115/115S "S" (SMALL)	OW 115/115S "W" (WIDE)	OW 170 "S" (SMALL)	OW 170 "W" (WIDE)
Tube	3mm	.118in	OT826.002.120					
Tube	3.18mm	.125in	OT826.002.122					
Tube	4.78mm	.187in	OT826.002.126					
Tube	6mm	.236in	OT826.002.128	OT827.002.120				
Tube	6.35mm	.250in	OT826.002.129	OT827.002.121				
Tube	8mm	.314in	OT826.002.133	OT827.002.125				
Tube	9.53mm	.375in	OT826.002.135	OT827.002.127				
Tube	10mm	.394in	OT826.002.137	OT827.002.129				
Tube	12mm	.472in	OT826.002.143	OT827.002.135				
Tube	12.7mm	.500in	OT826.002.145	OT827.002.137	OT824.002.228			
Short Ferrule	12.7mm	.500in		OT-76F-050				
DN 10	13mm	.512in	OT826.002.146	OT827.002.138				
Tube	15.88mm	.625in	OT826.002.157	OT827.002.149				
Tube (DN 15)	19.05mm	.750in	OT826.002.166	OT827.002.158	OT824.002.227			
Short Ferrule	19.05mm	.750in		OT-76F-075				
1/2in Pipe	21.3mm	.840in	OT826.002.170	OT827.002.162	OT824.002.122	OT824.002.322		
Tube	22.22mm	.875in	OT826.002.174	OT827.002.166	OT824.002.126	OT824.002.326		
DN 20	23mm	.905in	OT826.002.176	OT827.002.168	OT824.002.128	OT824.002.328		
Tube	25.4mm	1.000in	OT826.002.181	OT827.002.173	OT824.002.133	OT824.002.333		
Short Ferrule	25.4mm	1.000in		OT-76F-100	OT-115-FK			
Standard Ferrule	25.4mm	1.000in			OT-115SF-100			
3/4in Pipe	26.7mm	1.050in	OT826.002.183	OT827.002.175	OT824.002.135	OT824.002.335		
DN 25	29mm	1.142in	OT826.002.188	OT827.002.180	OT824.002.140	OT824.002.340		
Tube	31.75mm	1.250in	OT826.002.191	OT827.002.183	OT824.002.143	OT824.002.343		
1in Pipe	33.4mm	1.315in	OT826.002.195	OT827.002.187	OT824.002.147	OT824.002.347		
DN 32	35mm	1.378in	OT826.002.198	OT827.002.190	OT824.002.150	OT824.002.350		
Tube	38.1mm	1.500in	OT826.002.201	OT827.002.193	OT824.002.153	OT824.002.353		
Short Ferrule	38.1mm	1.500in		OT-76F-150	OT-115-FK			
Standard Ferrule	38.1mm	1.500in			OT-115SF-150			
DN 40	41mm	1.614in		OT827.002.195	OT824.002.155	OT824.002.355		
1 1/4in Pipe	42.16mm	1.660in		OT827.002.197	OT824.002.157	OT824.002.357		
1 1/2in Pipe	48.26mm	1.900in		OT827.002.209	OT824.002.169	OT824.002.369		
Tube	50.8mm	2.000in		OT827.002.213	OT824.002.173	OT824.002.373	OT825.002.121	OT825.002.321
Short Ferrule	50.8mm	2.000in		OT-76F-200	OT-115-FK			
Standard Ferrule	50.8mm	2.000in			OT-115SF-200			
DN 50	53mm	2.087in		OT827.002.216	OT824.002.176	OT824.002.376	OT825.002.124	OT825.002.324
2in Pipe	60.3mm	2.375in		OT827.002.221	OT824.002.181	OT824.002.381	OT825.002.129	OT825.002.329
Tube	63.5mm	2.500in		OT827.002.226	OT824.002.186	OT824.002.386	OT825.002.134	OT825.002.334
Short Ferrule	63.5mm	2.500in		OT-76F-250	OT-115-FK			
Standard Ferrule	63.5mm	2.500in			OT-115SF-250			
DN 65	70mm	2.759		OT827.002.228	OT824.002.188	OT824.002.388	OT825.002.136	OT825.002.336
2 1/2in Pipe	73mm	2.875in		OT827.002.231	OT824.002.191	OT824.002.391	OT825.002.138	OT825.002.338
Tube	76.2mm	3.000in		OT827.002.236	OT824.002.196	OT824.002.396	OT825.002.144	OT825.002.344
Short Ferrule	76.2mm	3.000in			OT-115-FK			
Standard Ferrule	76.2mm	3.000in			OT-115SF-300			
DN 80	85mm	3.346in			OT824.002.201	OT824.002.401	OT825.002.149	OT825.002.349
3in Pipe	88.9mm	3.500in			OT824.002.203	OT824.002.403	OT825.002.151	OT825.002.351
Tube	101.6mm	4.000in			OT824.002.211	OT824.002.411	OT825.002.158	OT825.002.358
Short Ferrule	101.6mm	4.000in			OT-115F-400			
Standard Ferrule	101.6mm	4.000in			OT-115SF-400			
DN 100	104mm	4.094in			OT824.002.211	OT824.002.411	OT825.002.159	OT825.002.359
4in Pipe	114.3mm	4.500in			OT824.002.215	OT824.002.415	OT825.002.164	OT825.002.364
Tube	127mm	5.000in					OT825.002.167	OT825.002.367
DN 125	129mm	5.079in					OT825.002.169	OT825.002.369
5in Pipe	141.3mm	5.563in					OT825.002.172	OT825.002.372
Tube	152.4mm	6.000in					OT825.002.173	OT825.002.373
DN 150	154mm	6.063in					OT825.002.174	OT825.002.374
6in Pipe	168.3mm	6.625in					OT825.002.178	OT825.002.378
Blank	Blank	Blank	OT826.002.210	OT827.002.241	OT824.002.220		OT825.002.185	